

RICOCHET MT2

Texecom
Designed to Perform



Next Generation Mesh Technology

The world's most advanced wireless security signalling technology just got even better. Ricochet mesh technology is more reliable, easier to use and provides greater range than any comparable wireless system. With the launch of Ricochet MT2 capability, wireless security systems have been taken to a whole new level.

Ricochet MT2 capability is now included in Premier Elite control panels (V2.00 and higher) and Premier Elite XP-W expanders (V2.00 and higher).

 **RICOCHET**[®]
SECURITY MT2

Sales: 01706 220460
Visit our new website: www.texe.com



Ricochet MT2 capability provides the following outstanding additional features:



Greater Scalability

Premier Elite control panels can accept multiple Ricochet MT2 capable wireless expanders increasing the wireless device capacity on every panel as detailed below:

Premier Elite Control Panel	24	48	88	168	640
No. of Wireless Devices	16	32	64	128	512

Increased Wireless Keyfob Users

With Ricochet MT2 and Premier Elite control panels the keyfobs are now assigned to users and no longer take up device slots on wireless expanders. This dramatically increases the number of wireless keyfobs available on each system.

Premier Elite Control Panel	24	48	88	168	640
No. of Keyfob Users	25	50	100	200	256



New 'Hybrid' Power Saving Mode

The 'Hybrid' mode provides the best of both worlds by increasing device responsiveness and reducing power consumption. In this mode, devices are deactivated when the system (or relevant area) is disarmed, and reactivated when the system (or area) is armed. A 'Global Poll' (patent pending) function updates all the wireless devices in a few seconds at the point of arming.

New Device Types

The Hybrid power saving mode has facilitated a new motion sensing device type, the Premier Elite DT-W. This wireless dual technology detector features all the performance characteristics of the acclaimed Premier Elite DT but in a Ricochet-enabled wireless form. In addition, new Ricochet enabled input/output modules are being developed that will allow any security device to signal wirelessly across a Ricochet mesh network system.



New Simplified Programming

Programming and commissioning has been simplified by integrating wireless setup directly into Premier Elite control panels. Wireless devices can be added or removed from the system directly from the zone programming menu. Wireless keyfobs can be added or removed directly from the user programming menu.

Remote Diagnostics

Texecom's Wintex upload/download software now integrates with Ricochet Monitor, allowing remote diagnostics of wireless system performance. With this integration, multiple wireless networks can be assessed, attributes configured and graphical representations of each mesh network can be diagnosed, all from within the Wintex profile. In addition, device zone allocations are shown from within the Ricochet Monitor diagnostics package, making system assessments even more intuitive and easier to use.



Professional Wireless Security with **RICOCHET™** mesh technology



 **RICOCHET®**
mesh technology

Texecom
Designed to Perform

RICOCHET™ wireless technology

Introducing the next generation of wireless security, Texecom's new **RICOCHET** mesh networking wireless technology delivers more performance than any other wireless security system.

RICOCHET enabled wireless devices receive and repeat wireless transmissions from other devices. The size, scalability and range of the entire system are extended as wireless signalling is no longer limited by point-to-point communications.

The range of a **RICOCHET** enabled wireless system is greater than previous systems, with multiple devices capable of relaying messages to and from even the most remote locations in a building.

Each **RICOCHET** enabled device provides signalling routes to and from Texecom Premier Control Panels. Should wireless connection between two devices weaken, the network will 'self-heal' and automatically re-route communications via alternate **RICOCHET** enabled devices. With more **RICOCHET** enabled devices installed, the greater the reliability of the system.

 **RICOCHET®**
mesh technology





Texecom
Designed to Perform



RESIDENTIAL

RICOCHET enabled wireless devices protect residential properties with ease. A new Commission Mode* setup procedure makes the installation process simple, reliable and fast.

*World-wide patents pending



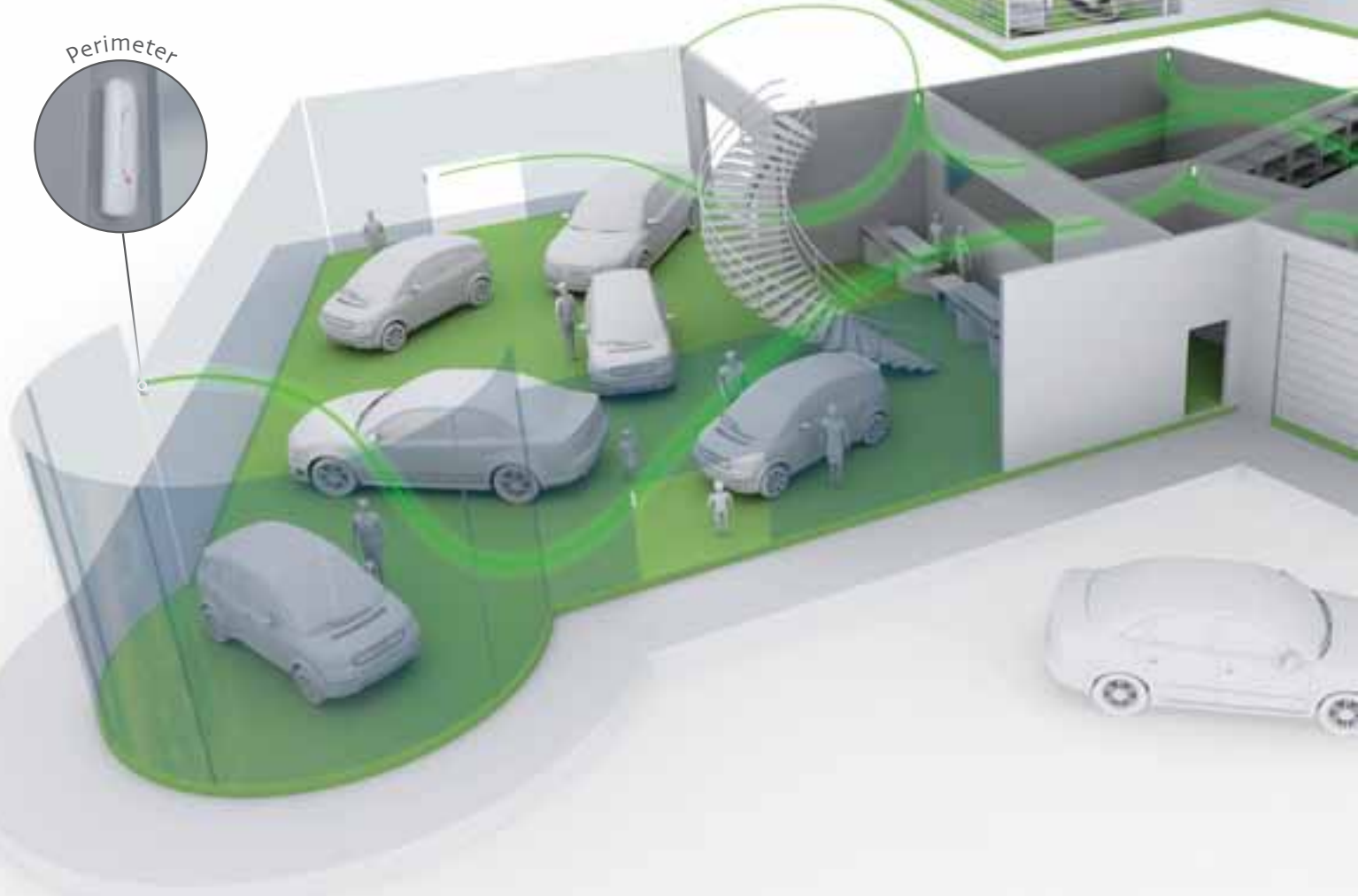
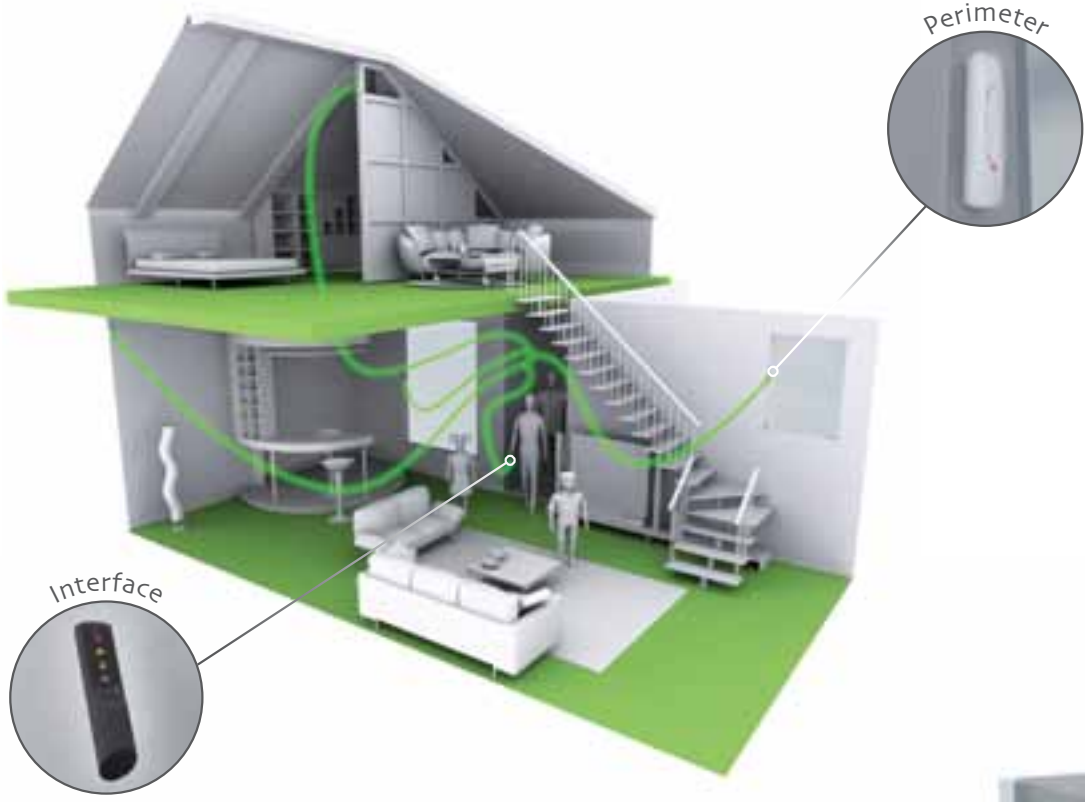
COMMERCIAL

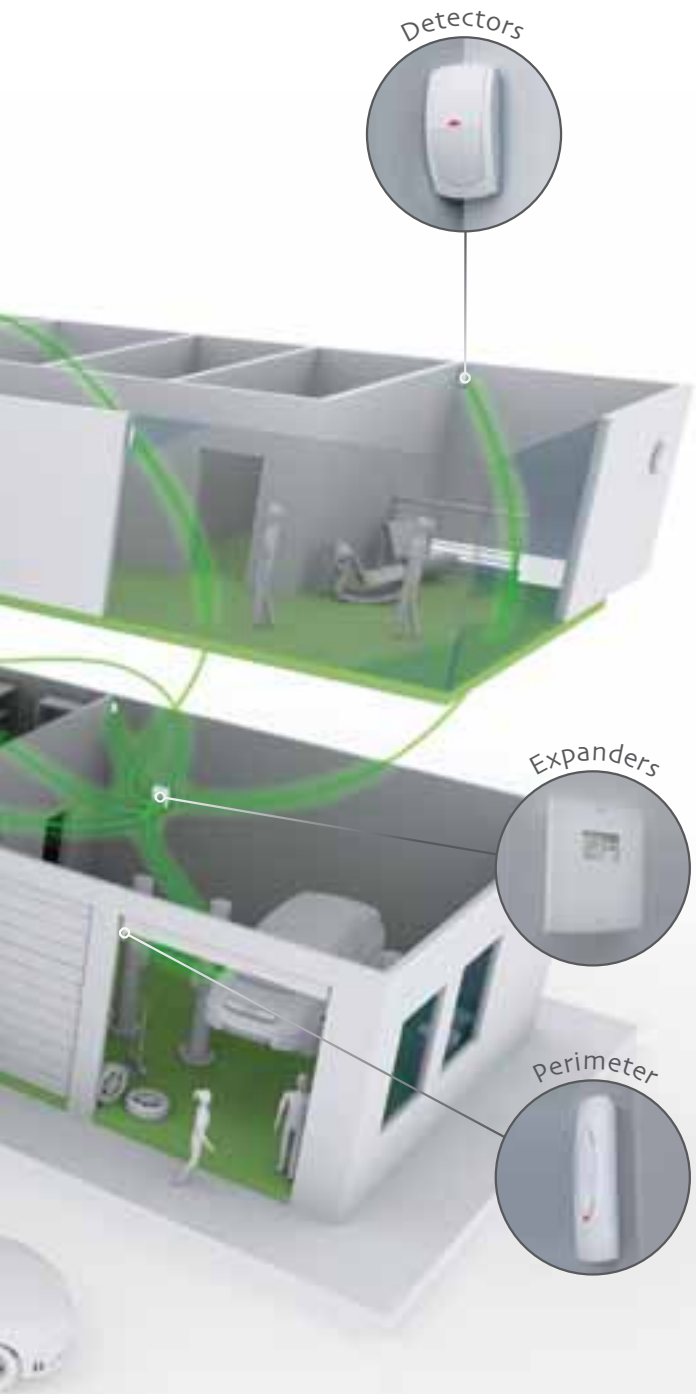
The new **RICOCHET** wireless technology has been invented to provide reliable wireless communications in commercial environments. The Signal Security™ and self-healing functions deliver unparalleled communications reliability.



SCALABLE

Future **RICOCHET** enabled wireless devices will be truly scalable, with multiple wireless networks running side-by-side capturing hundreds of wireless devices.





Features

Mesh Network

RICOCHET enabled devices create a system whereby each wireless device is capable of repeating messages from other wireless devices.



Bi-Directional

Two-way communication between **RICOCHET** enabled devices and the control system increases efficiency and reliability while providing enhanced functionality.



Self-Healing

RICOCHET enabled devices dynamically change wireless signal routing to utilise the most reliable communication pathway available.



Superior Range

RICOCHET enabled devices feature class-leading point-to-point wireless range. When used as part of a mesh-network, the range is extended further as each wireless device acts as a repeater, extending the range for further devices.



Signal Security

RICOCHET enabled wireless devices provide multiple communication routes. Signal Security measures the number of alternative routes and offers superior indication of system integrity when compared to signal strength alone.



Commission Mode

A **RICOCHET** enabled system set-up procedure whereby wireless connectivity is indicated on each individual device.



Energy Efficiency

A **RICOCHET** enabled wireless device will use 1000 times less energy than an equivalent hard-wired product.



Signal Encryption

All **RICOCHET** wireless communications are protected by sophisticated encryption algorithms.



Benefits

EASIER

Simple to setup, quick to install.

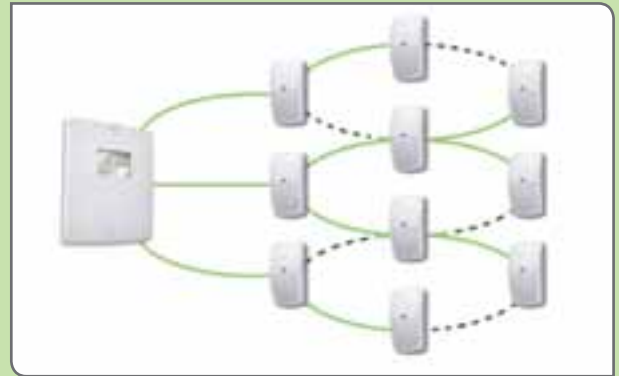
With 'in-range' indication at each device, combined with automatic wireless routing, installing a wireless system has never been **easier**.



SMARTER

An intelligent system is a reliable system.

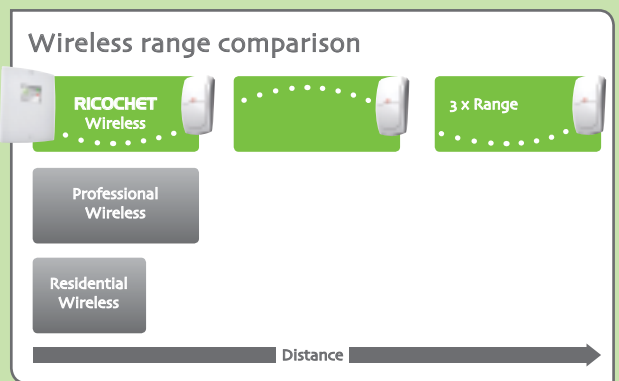
Multiple signal routes adapt to the environment instantly. Signal Security measurements provide peace of mind. Do more with wireless; be **smarter**.



FURTHER

Greater range delivers greater protection.

Adding devices increases the range of the system making extra repeaters no longer required. Let **RICOCHET** wireless technology take you **further**.



System Setup Tools

Commission Mode

The most basic and simple feature is the device commission mode. Once a device has been connected onto a system, the device LED flashes to indicate adequate communication to the wireless expander. This is made possible by the bi-directional signalling across the mesh-network and turns each device into its own signal strength meter.

The Commission Mode feature is the most simple, quick and easy method of installing a wireless security system.



Keypad Diagnostics

The next level of diagnostic support is an engineer's keypad facility. Any Premier LCD keypad can simply be connected to **RICOCHET** enabled wireless expander and a host of diagnostic features is made available. Devices can be learned or removed from the system, signal strength information and communication routing information is all available on-screen. All the different device attribute features can be programmed from this menu structure.

The latest version of Premier Series control panel software provides diagnostic support directly from the control panel interface.



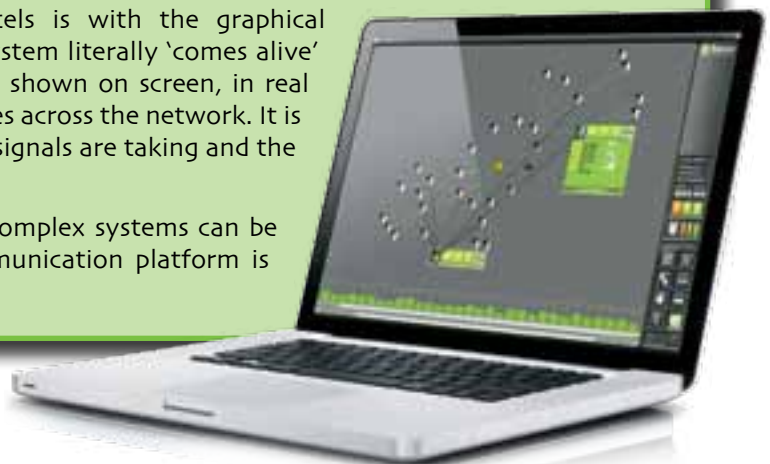
PC Software

The most advanced diagnostic tool is the PC-based **RICOCHET** Monitor software. This software, when installed on a laptop and connected to a **RICOCHET** enabled wireless expander, provides greater visibility and control over the wireless system performance than ever before.

From a simple, intuitive menu screen all device status is available at a glance, with clear graphics highlighting signalling performance. Device attributes can be configured and distributed across the network in seconds thanks to an innovative 'global poll' function that communicates to all devices within moments.

Where the **RICOCHET** Monitor software really excels is with the graphical representation of the mesh-networking system. The system literally 'comes alive' when the graphical function is selected. Each device is shown on screen, in real time, placed according to where the device communicates across the network. It is instantly visible and clear which routes communication signals are taking and the overall network performance is demonstrated.

With the power of the graphical user interface, even complex systems can be diagnosed simply, providing confidence that the communication platform is robust and reliable.



Commission Mode & RICOCHET wireless technology have world-wide patents pending.

RICOCHET, Signal Security, Premier, Prestige, Impaq, SmartKey and the following logos are trademarks of Texecom Ltd. © 2010.





www.texe.com/ricochet

Texecom
Designed to Perform